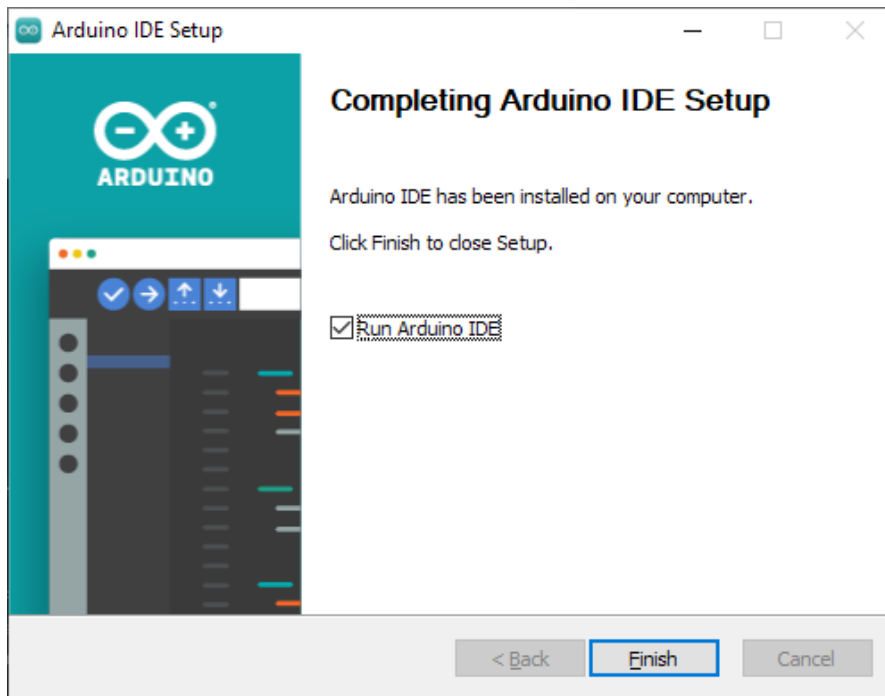


Instalacija Arduino IDE

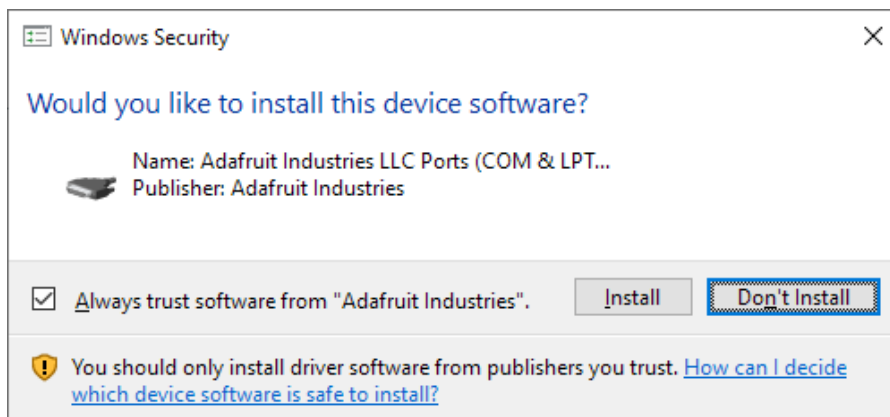
Preuzeti instalacioni paket Arduino IDE sa sajta:

<https://www.arduino.cc/en/software>

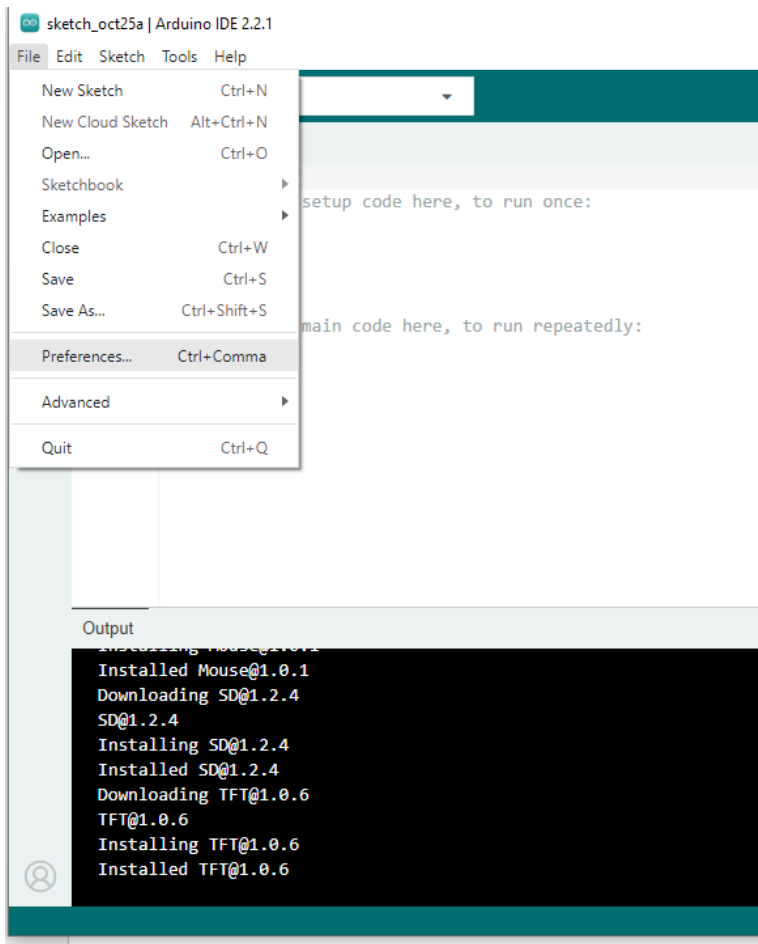
Instalirati Arduino IDE



Klik na Finish. Otvara se Arduino IDE. Automatski se nastavlja instalacija. Potvrditi instalaciju potrebnih drajvera, nekoliko dijaloga poput ovog ispod:



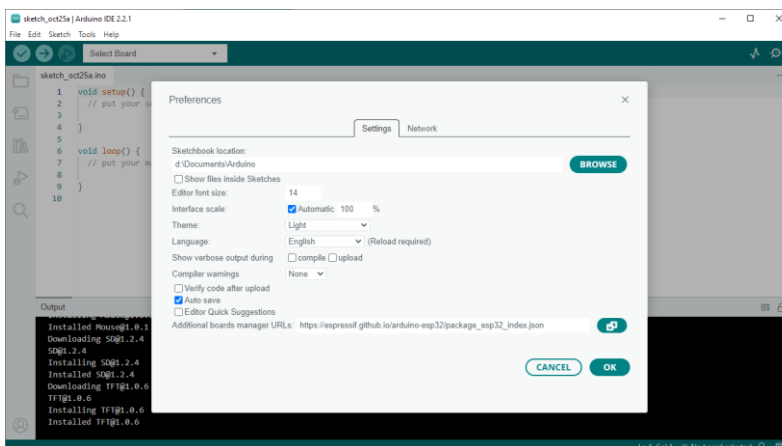
Otvoriti Dijalog Preferences:



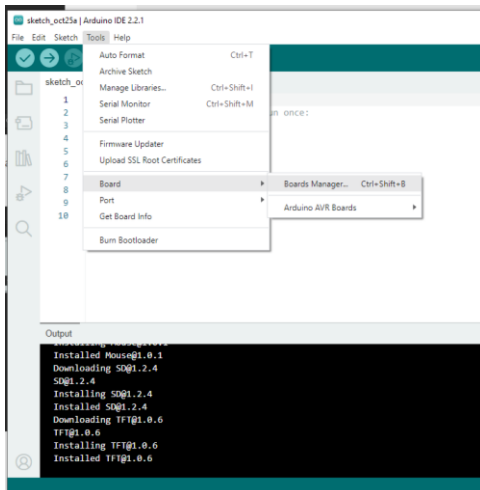
Na dijalogu Preferences, u polje Additional boards manager URLs, upisati:

https://espressif.github.io/arduino-esp32/package_esp32_index.json

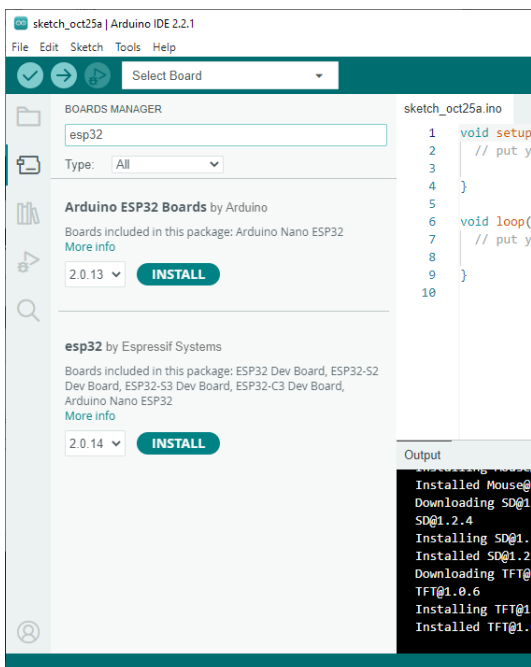
Zatim OK



Izabrati: Board-Board Manager...



U polje za pretragu (ispod BOARDS MANAGERS) upisati esp32



Klik na INSTALL stavke „esp32 by Espressif Systems“ i sačekati da se proces instalacije završi.